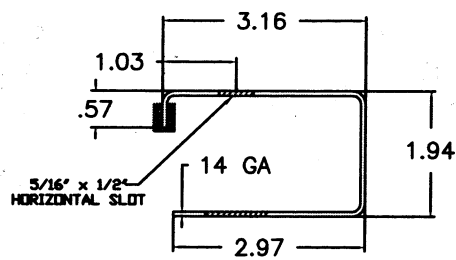
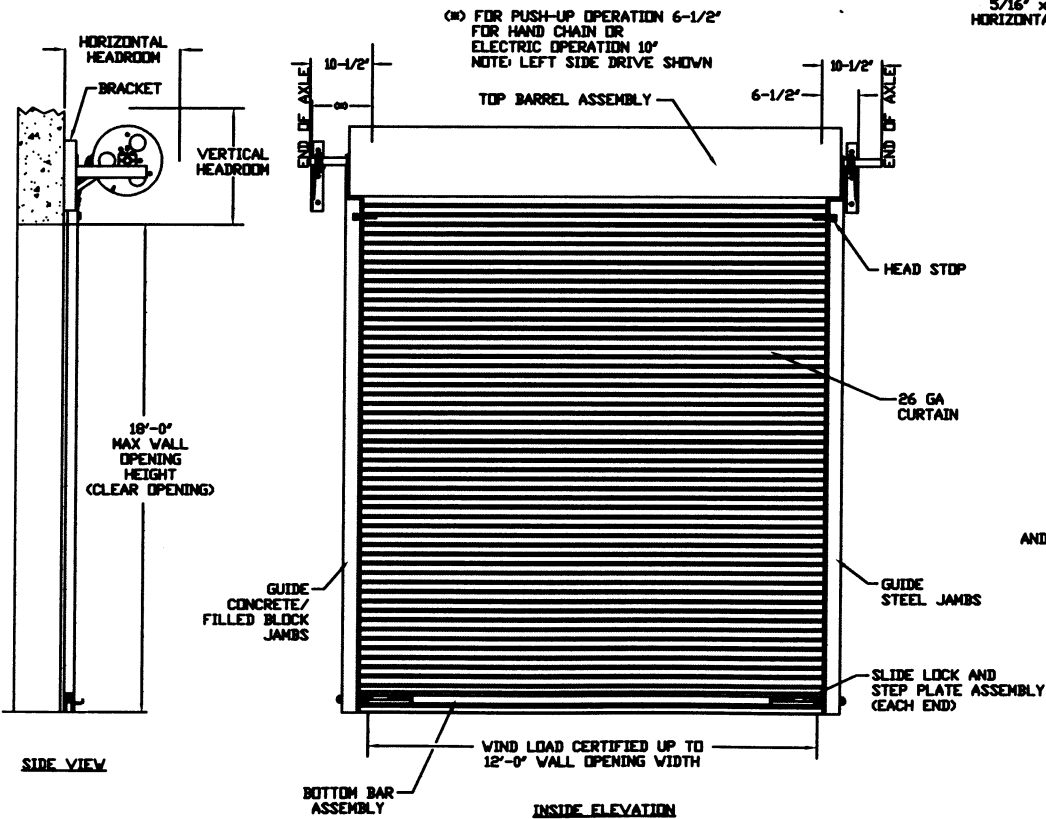
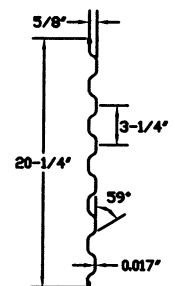


MINIMUM HEADROOM DIMENSIONS						
OPENING HEIGHT	THRU 8'-0"	OVER 8'-0" THRU 10'-0"	OVER 10'-0" THRU 14'-0"	OVER 14'-0" THRU 16'-0"	OVER 16'-0" THRU 18'-0"	OVER 18'-0" THRU 20'-0"
VERTICAL HEADROOM	18'	20'	21'	22'	23'	24'
HORIZONTAL HEADROOM	19'	21'	22'	23'	24'	25'

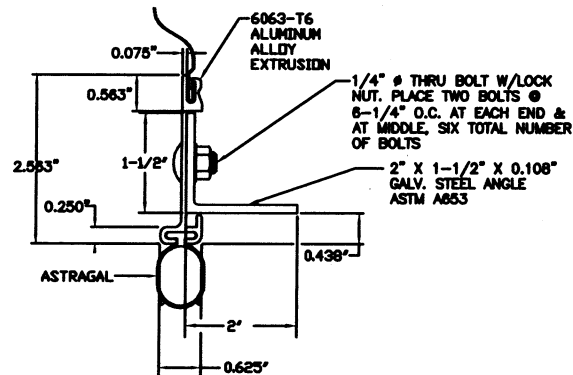
REVISIONS			
REV	DESCRIPTION	DATE	APPROVAL
-	RELEASE PER DRG	11/24/08	BA



ASTM A653 G40 GALVANIZED CS TYPE B
GUIDE DETAIL



ASTM A653 SS GRADE 80 WITH FULL COAT OF PRIMER AND BAKED POLYESTER FINISH COAT
TYPICAL PANEL (26 GA) DETAIL



BOTTOM BAR ASSEMBLY DETAIL

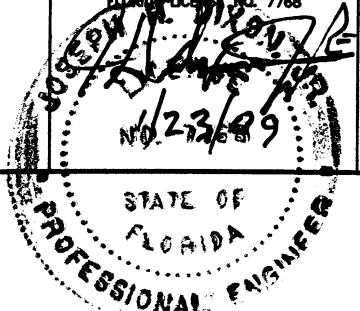
GENERAL NOTES:

- SERIES 2400 IS BUILT THE SAME AS SERIES 2500 BUT IS PROVIDED WITH DRUMS OF 9.5' DIAMETER ON THE TOP BARREL FOR LOW HEADROOM REQUIREMENTS.
- SERIES 2750 IS THE INSULATED VERSION OF SERIES 2500. AND SERIES 2450 IS THE INSULATED VERSION OF SERIES 2400.
- OPERATION TYPE MAY BE PUSH-UP, HAND CHAIN OR ELECTRIC.

CERTIFIED TESTING LABORATORIES

7252 Narcoossee Road, Orlando, Florida 32822
Phone: (407) 384-7744 Fax: (407) 384-7751

JOSEPH H. DIXON, JR.
PROFESSIONAL ENGINEER
FLORIDA LICENSE NO. 7768



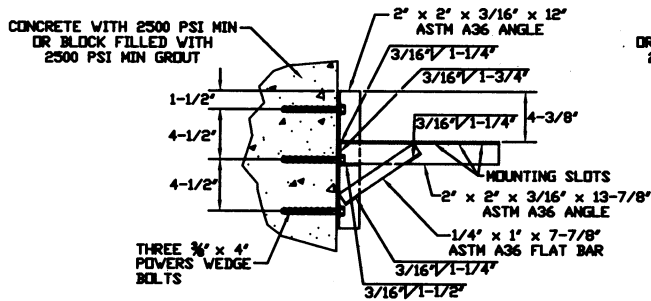
THESE CONFIDENTIAL DOCUMENTS SUBMITTED BY DBCI CONTAIN INFORMATION OF A PROPRIETARY NATURE AND MAY NOT BE REPRODUCED OR USED TO MANUFACTURE ANYTHING IN PART OR IN WHOLE FOR ANY PURPOSE OTHER THAN THAT WHICH IS NECESSARY FOR PREPARATION OF BIDS OR ENGINEERING WITHOUT THE EXPRESS PERMISSION OF DBCI WHICH MAY RECALL DOCUMENTS AT ANY TIME.

UNLESS OTHERWISE SPECIFIED DIMENSIONS ARE IN INCHES
TOLERANCES ARE:

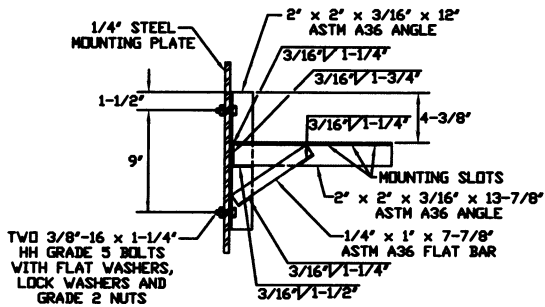
DECIMAL	FRACTIONS	ANGLES	HOLE DIAMETERS
.XX ±.03	± 1/16	± 0'30"	UNDER .251 +.004 -.003
.XXX ±.005			.251 to .500 +.006 -.003
			OVER .500 +.008 -.003

DATE	N/A
APPROVALS	N/A
APPLIED FROM	N/A
LIST OF HEADERS	N/A
DATE	
APPROVED	
DATE	
APPROVED	

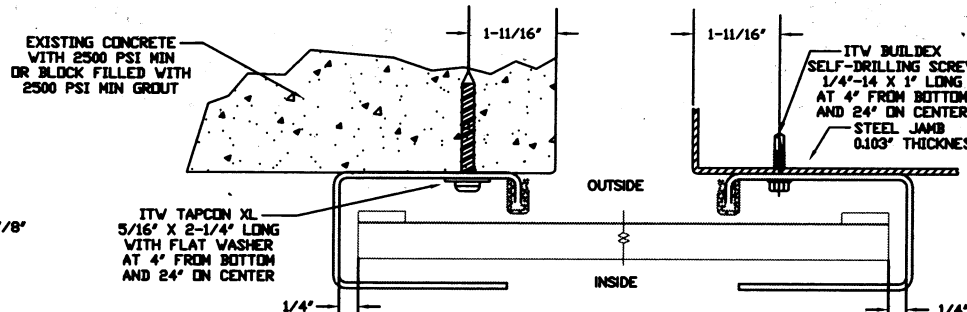
DBCI		DOORS & BUILDING COMPONENTS DOUGLASSVILLE, GA CHANDLER, AZ HOUSTON, TX ©2000 DBCI ALL RIGHTS RESERVED	
26 GA WIND LOAD CERTIFIED UP TO 12'-0" x 18'-0" SIZE			
SERIES 2400/2500 DOOR ASSEMBLY			
DESIGNER	BRAY ALLEN	DATE	11/24/08
CHECKED	BRAY ALLEN	DATE	11/24/08
APPROVED		DATE	
SCALE	NONE	SHEET	1 OF 2



DOOR MOUNTING BRACKET TO MASONRY DETAIL

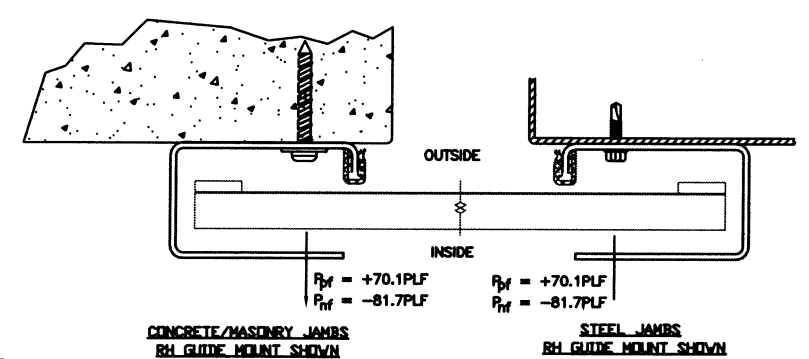


DOOR MOUNTING BRACKET TO STEEL DETAIL



FOR MASONRY JAMBS CURTAIN WIDTH+OPENING WIDTH+7" FOR STEEL JAMBS CURTAIN WIDTH+OPENING WIDTH+7"

CONCRETE/MASONRY JAMBS RH GUIDE MOUNT SHOWN STEEL JAMBS RH GUIDE MOUNT SHOWN



CONCRETE/MASONRY JAMBS RH GUIDE MOUNT SHOWN STEEL JAMBS RH GUIDE MOUNT SHOWN

REVISIONS			
REV	DESCRIPTION	DATE	APPROVAL
-	RELEASE PER DBI	12/24/08	BA

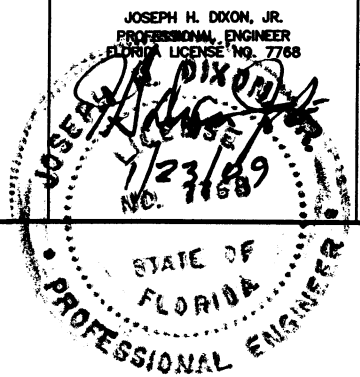
DOOR SCHEDULE	
DOOR WIDTH	DESIGN PRESSURE (PSF)
≤ 3'-0"	+ 44.4
	- 51.8
4'-0"	+ 33.7
	- 39.3
5'-0"	+ 27.2
	- 31.6
6'-0"	+ 22.7
	- 26.5
7'-0"	+ 19.6
	- 22.8
8'-0"	+ 17.2
	- 20.0
9'-0"	+ 15.3
	- 17.8
10'-0"	+ 13.8
	- 16.0
11'-0"	+ 12.5
	- 14.6
12'-0"	+ 11.5
	- 13.4

GENERAL NOTES:

1. THE DBCI 2400/2500 SERIES ROLL-UP DOOR ASSEMBLY IS DESIGNED IN ACCORDANCE WITH DASMA 108 AND THE FLORIDA BUILDING CODE TO SAFELY RESIST FOR A 12'-0" WIDE OPENING THE WIND LOADS DENOTED BELOW:
 POSITIVE DESIGN LOAD = + 11.5 PSF;
 NEGATIVE DESIGN LOAD = - 13.4 PSF.
2. THE TEST DOOR OPENING SIZE WAS 12'-0" x 7'-0". FOR DIFFERENT OPENING SIZES, THE CORRESPONDING DOOR SIZES ARE CALCULATED TO SAFELY RESIST THE DESIGN LOADS DENOTED IN THE DOOR SCHEDULE.
3. THIS EVALUATION IS BASED ON CERTIFIED TESTING LABORATORIES TEST REPORT NUMBER CTLA- 1925W-1 dated December 10, 2008.

4. THIS PRODUCT EVALUATION IS GENERIC. IT DOES NOT INCLUDE INFORMATION PREPARED FOR A SPECIFIC SITE.
5. IT IS THE CONTRACTOR'S RESPONSIBILITY TO VERIFY THE STRUCTURAL CAPACITY OF THE SUBSTRATE (JAMB) TO RESIST THE LOADS IMPOSED BY THE ROLL-UP DOOR.
6. ALL DOOR JAMBS (MASONRY OR STEEL) MUST BE DESIGNED ACCORDING TO THE APPLICABLE CODES TO RESIST THE FORCES SHOWN ABOVE.
7. THE DOOR ASSEMBLY SHALL BE INSTALLED IN ACCORDANCE WITH THE MANUFACTURER'S INSTALLATION INSTRUCTIONS.

CERTIFIED TESTING LABORATORIES
 7252 Narcoossee Road, Orlando, Florida 32822
 Phone: (407) 384-7744 Fax: (407) 384-7751



THESE CONFIDENTIAL DOCUMENTS SUBMITTED BY DBCI CONTAIN INFORMATION OF A PROPRIETARY NATURE AND MAY NOT BE REPRODUCED OR USED TO MANUFACTURE ANYTHING IN PART OR IN WHOLE FOR ANY PURPOSE OTHER THAN THAT WHICH IS NECESSARY FOR PREPARATION OF BIDS OR ENGINEERING WITHOUT THE EXPRESS PERMISSION OF DBCI WHICH MAY RECALL DOCUMENTS AT ANY TIME.

UNLESS OTHERWISE SPECIFIED DIMENSIONS ARE IN INCHES
 TOLERANCES ARE:
 DECIMAL FRACTIONS ANGLES HOLE DIAMETERS
 .XX ±.03 ± 1/16 ± 0'30" UNDER .251 +.004
 .XXX ±.005 .251 to .500 -.003
 .500 to .750 +.006
 OVER .750 -.003

PAWF NUMBER	N/A
UNIFORM	N/A
APPLIED PRESSURE	N/A
UNIT OF MEASURE	N/A
APPROVALS	DATE
DESIGNED BY	DATE
CHECKED BY	DATE
APPROVED BY	DATE

DBCI DOORS & BUILDING COMPONENTS
 DOUGLASSVILLE, GA CHANDLER, AZ HOUSTON, TX
 ©2000 DBCI ALL RIGHTS RESERVED

26 GA WIND LOAD CERTIFIED UP TO 12'-0" x 18'-0" SIZE
SERIES 2400/2500 DOOR ASSEMBLY

TEST REPORT NUMBER: **-2500-08-0001**

APPROVALS: NONE 2 2