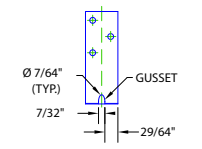
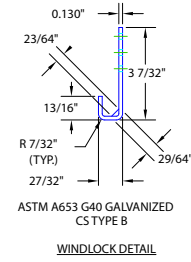
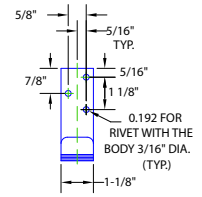
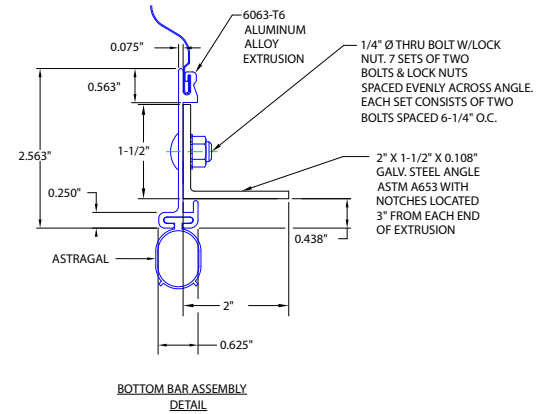
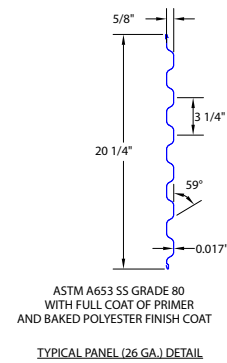
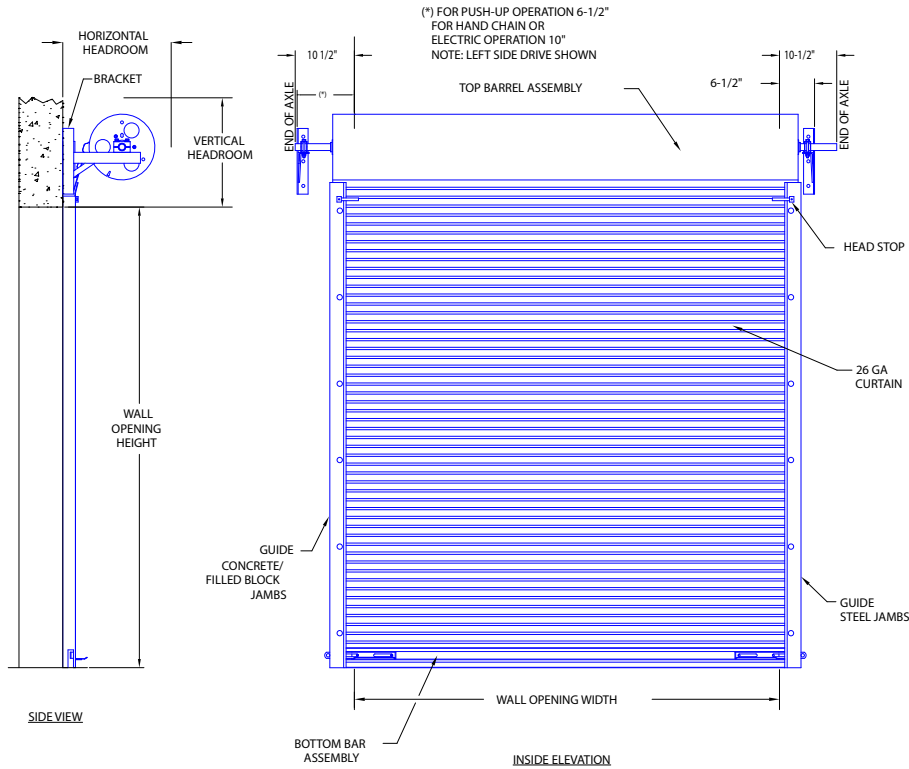


MINIMUM HEADROOM DIMENSIONS

| OPENING HEIGHT      | THRU 8'-0" | OVER 8'-0" THRU 10'-0" | OVER 10'-0" THRU 14'-0" | OVER 14'-0" THRU 16'-0" | OVER 16'-0" THRU 18'-0" | OVER 18'-0" THRU 20'-0" |
|---------------------|------------|------------------------|-------------------------|-------------------------|-------------------------|-------------------------|
| VERTICAL HEADROOM   | 18"        | 20"                    | 21"                     | 22"                     | 23"                     | 24"                     |
| HORIZONTAL HEADROOM | 19"        | 21"                    | 22"                     | 23"                     | 24"                     | 25"                     |

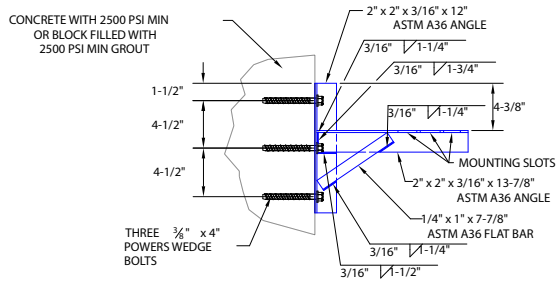


EACH WINDLOCK IS ATTACHED TO CURTAIN WITH THREE STEEL RIVETS WITH THE BODY 3/16" DIA.

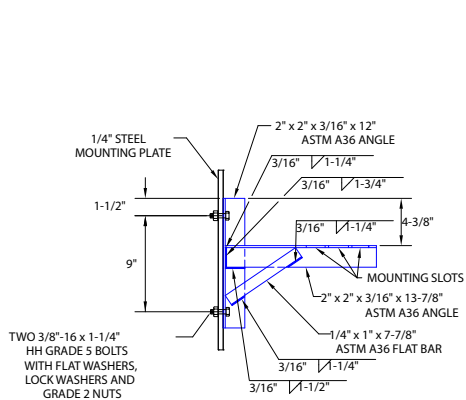
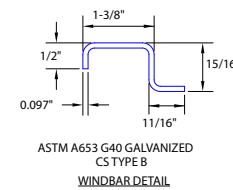
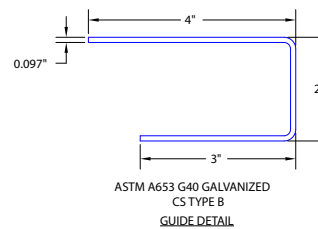
N/A  
 N/A  
 N/A  
 N/A  
 H.B. 7/26/06  
 H.B. 7/26/06



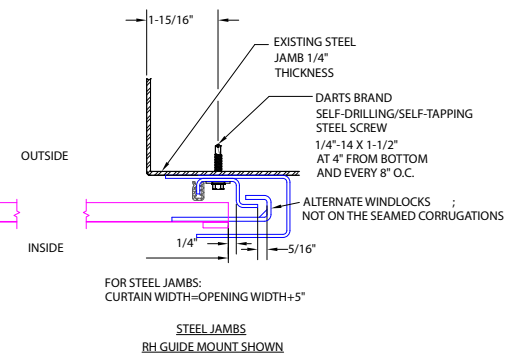
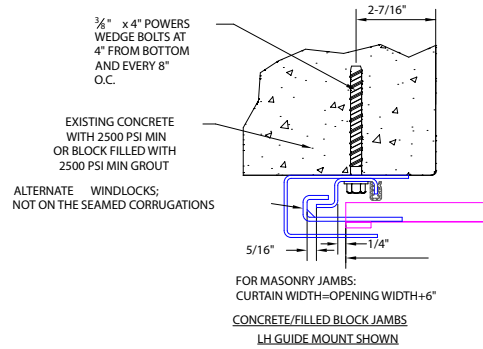
26 GA, MAX. SIZE 18'-0" x 20'-0"  
**SERIES 5000/5250 DOOR ASSEMBLY**  
**-300-961-0001.01**  
 NONE 1 2



DOOR MOUNTING BRACKET TO MASONRY DETAIL



DOOR MOUNTING BRACKET TO STEEL DETAIL



N/A

N/A

N/A

N/A

H.B.

7/26/06

H.B.

7/26/06



26 GA, MAX. SIZE 18'-0" x 20'-0"

SERIES 5000/5250 DOOR ASSEMBLY

-300-961-0001.02

NONE

2

2