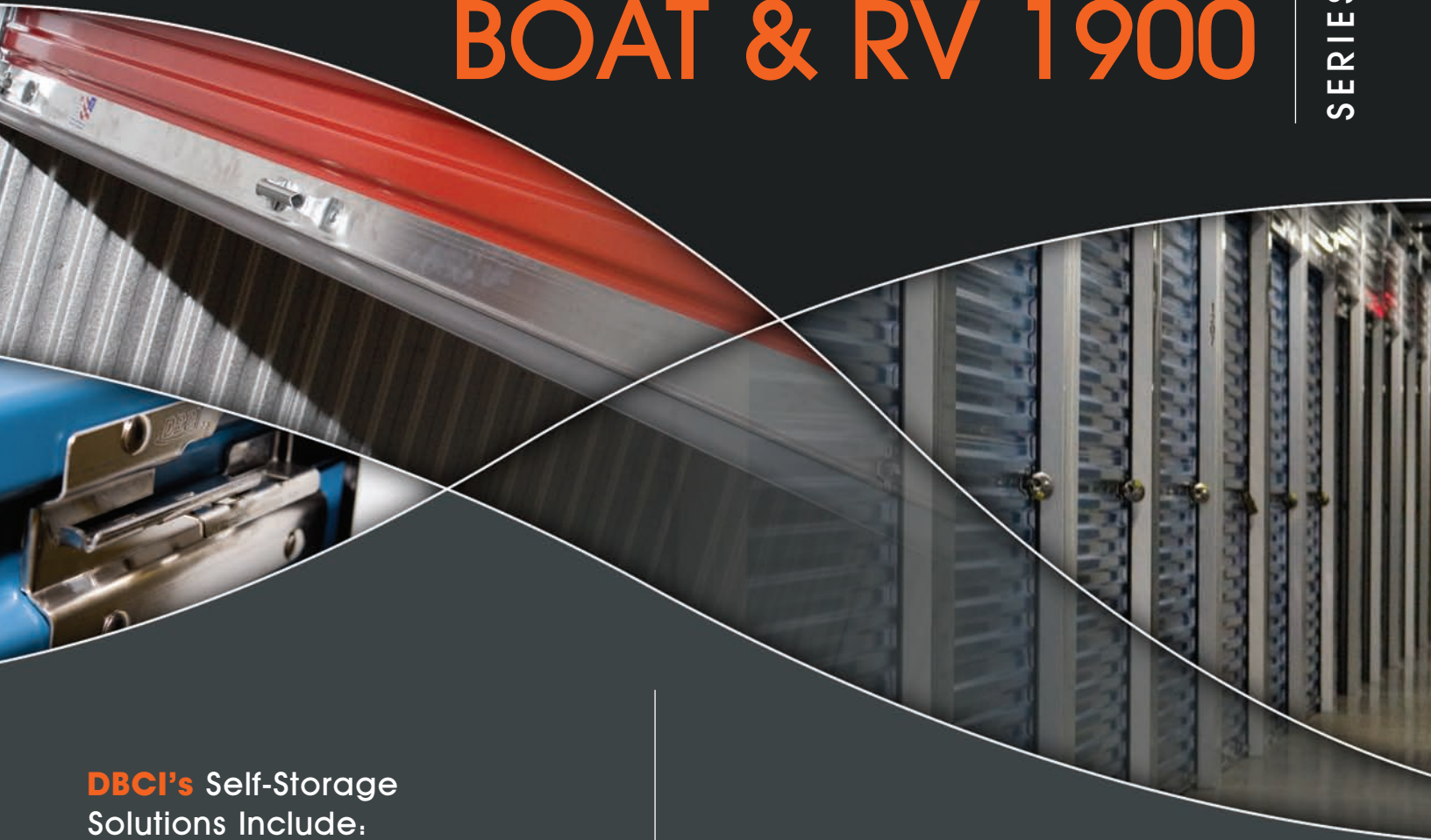


# BOAT & RV 1900

SERIES



## DBCI's Self-Storage Solutions Include:

### Maximized Capacity Solution

- Summit Series (Mezzanine)

### Wine Storage Solution

- Vineyard Series

### Self-Storage Doors

- 650 Series
- 690 Series
- Wind Load Door
- 1900 Series Boat & RV Doors
- 651, 691, 1950 Series Insulated Doors

### Hallway Systems

- Swing Door 300 Series (flush and corrugated)
- Swing Door 500 Series (flush and corrugated)
- Header Panel
- Filler Panel
- Corawall
- Securawall

### Soffit Systems

- Hall Soffit (three-piece)
- Light Soffit
- Entry Soffit
- Flush Ceiling Soffit

### Security Solutions

- Mesh Security Wire
- Burglar Security Bars

### Safeguards

- Kickplates (Galvanized or Diamond Plates)
- Cornerguards (Galvanized or Diamond Plates)
- Linerwalls (Galvanized or Diamond Plates)

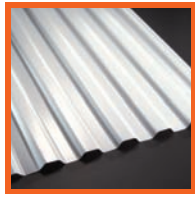
### Structural Framing

- Exterior Pier & Header System

The 1900 Series not only meets the necessary requirements for all of your Boat & RV applications, it exceeds the requirements. The 1900 is a heavy-duty door that has the appeal of a self-storage door and the versatility of a commercial door. These doors are manufactured from components allowing for maximum strength and a long life.

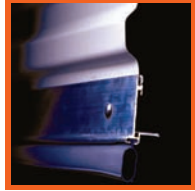


Integrity. Partnership. Quality.



## Curtain

- 26-gauge galvanized, Grade E hard steel
- Deep-ribbed corrugation
- Maximum opening size of 12' x 14'
- Siliconized polyester WeatherX paint over prime coat
- 20 standard colors, special colors available upon request
- Wash coat over primer interior side
- 30-year film integrity warranty, up to 25-year chalk and fade warranty
- Flexible wear strips
- **NOTE:** 1900 Series is not wind-certified. Please review the 2500 or 5000 Series for wind load doors.



## Bottom Bar

- 6063 – T6 aluminum extrusion
- 2" x 1 1/2" galvanized angles
- Bulb astragal (Durometer 75)
- Stainless steel nuts and bolts

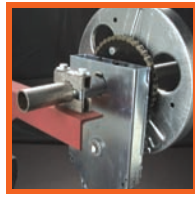


## Axle-Drum Assembly

- 1 5/16" O.D. steel axle, 14-gauge
- 11-gauge on doors over 10'
- Oil-tempered torsion springs
- Utilizes 9 1/2", 18-gauge drums
- Shielded steel ball bearings in drums
- 26-gauge full top sheet

## Guides

- 14-gauge galvanized
- Polyethylene wear strip
- Bolt on head stop 1/4" plate steel
- 1 5/8" deep engagement
- Pre-punched for lock and attachment fasteners



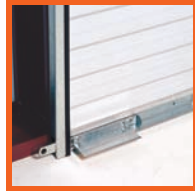
## Hardware

- 13-gauge saddle clamps
- 10-gauge slide locks; two per door
- 16-gauge step plate; two per door
- 1/4" steel angle T-bracket



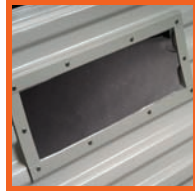
## Options

- Insulation 1950 Series
- Chain hoist 4:1 reduction
- Vision panels (17" x 5")
- Top draft stop
- Hood
- Steel mounting plates

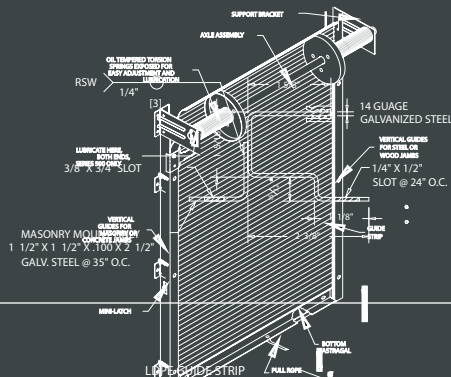


## Opening Height Headroom

- 8' to 10' is 17"
- 10' to 14' is 19"



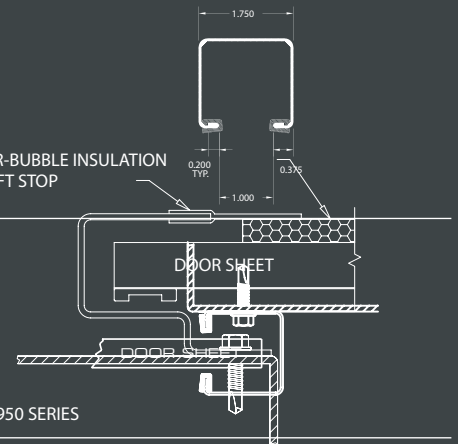
GUIDE  
DETAIL



DOOR  
ENGAGEMENT

INSULATED  
DOOR DETAIL

FOIL BACKED AIR-BUBBLE INSULATION  
VINYL SIDE DRAFT STOP



DOOR  
ENGAGEMENT

INSULATED  
DOOR DETAIL

