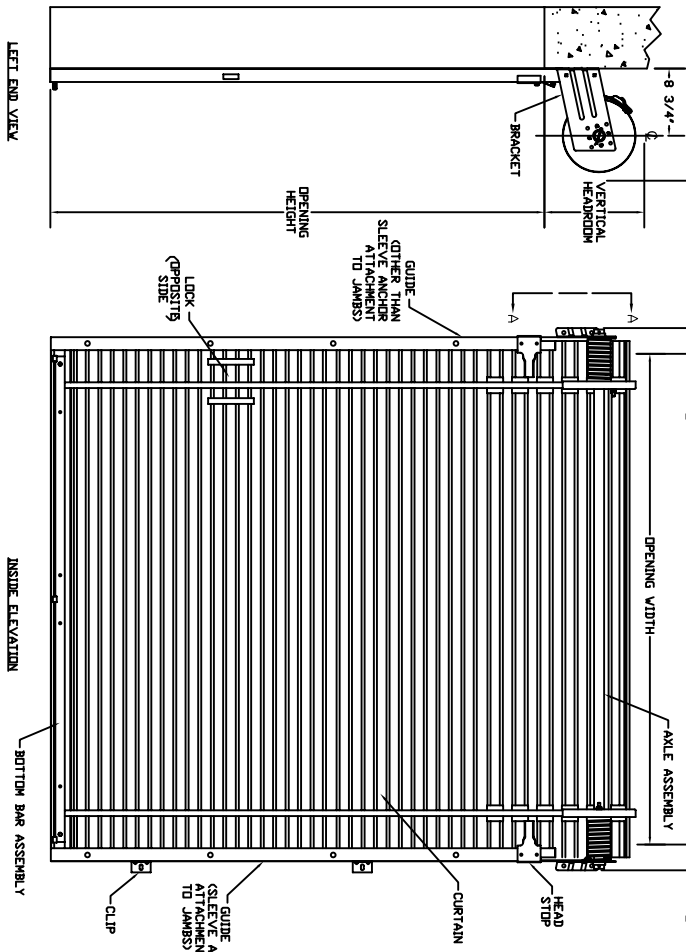
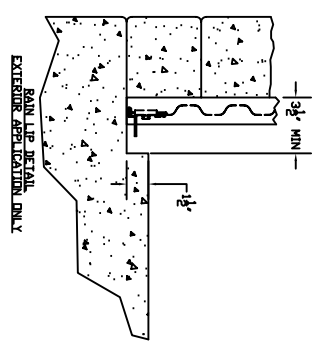
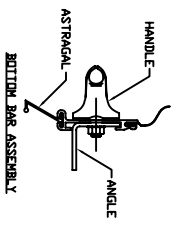
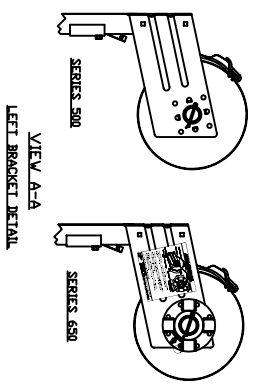
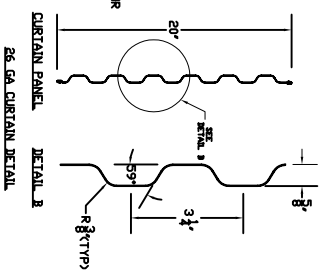


3 1/8" OPENING HEIGHTS THRU 8'-8"
 3 1/2" OPENING HEIGHTS OVER 8'-8"



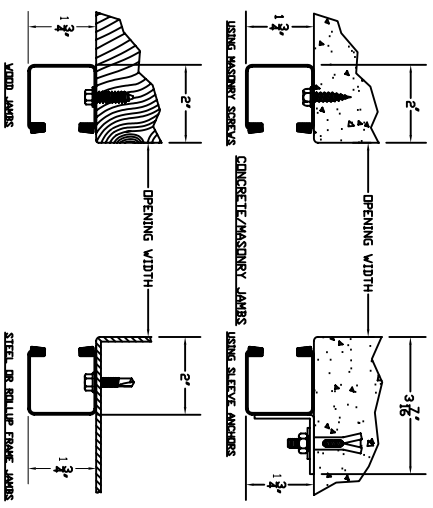
3 1/8" OPENING HEIGHTS THRU 8'-8"
 3 1/2" OPENING HEIGHTS OVER 8'-8"

| OPENING HEIGHT | VERTICAL HEADROOM | HORIZONTAL HEADROOM |
|----------------|-------------------|---------------------|
| THRU 7'-4" | 15 1/2" | 17" |
| THRU 8'-8" | 16" | 17 1/2" |
| THRU 10'-0" | 18" | 19 1/4" |



- NOTES:
1. DOOR SERIES DESCRIPTIONS: 500-BEARING BRACKETS 500-LH TENSIDER BRACKET, RH BEARING BRACKET
 2. CLEARANCES SHOWN ARE RECOMMENDED. LESSER CLEARANCES MAY BE POSSIBLE PROVIDED BY OTHERS
 3. ALL OPENING PREPARATION, ELECTRICAL TOWER AND FIELD PAINTING SHALL BE PROVIDED BY OTHERS
 4. CURTAIN FINISH SHALL BE SILICONIZED POLYESTER PRE-PAINT OVER GALVANIZED GRADE E STEEL
 5. GRADE E STEEL: BOTTOM BAR ANGLE, HEAD STOP, LOCK AND HANDLES ARE ZINC COATED. MINI SLIDE LATCH SHALL BE STAINLESS STEEL
 6. UNLESS OTHERWISE NOTED, LOCKING SHALL BE BY SINGLE MINI SLIDE LATCH BOLTED TO CURTAIN AND SUITABLE FOR DOUBLE PATDOCKS.

18 GA GUIDE MOUNTING DETAIL



| FACTORY ORDER NUMBER | DOOR SERIES | QTY. | OPENING SIZE | | JAMB TYPE | | | ROLLUP FRAME | OUTSIDE CURTAIN COLOR | ADDED OPTIONS |
|----------------------|-------------|------|--------------|--------|-----------|--------------------------------------|------|--------------|-----------------------|---------------|
| | | | WIDTH | HEIGHT | STEEL | CONCRETE AND MASONRY MASONRY SCREENS | WOOD | | | |
| | 500 | 650 | | | | | | | | |

MINI DOOR SERIES: 500/650

1

400-005-0021.02 1