

# COMMERCIAL DOOR INSTALLATION INSTRUCTIONS



SERIES 3000 & 5000

## IMPORTANT NOTICE

### In the following text, the word:

**WARNING:** Indicates that serious injury or death can result from failure to follow instructions.

**CAUTION:** Indicates that minor injury or property damage can result from failure to follow instructions.

**NOTE:** Indicates that special attention should be given to the instructions.

**CAUTION:** Use proper lifting equipment and correct procedures to avoid injury.

**DO NOT CUT THE TAPE OR PLASTIC**, which holds the door in a roll. You will be told at a later time exactly when to cut these items. No guarantee will be given or responsibility accepted by the manufacturer if the door is not installed as instructed. For proper operation, follow the instructions given. PLEASE review ALL instructions before starting actual work.

**WARNING:** Overhead doors are large, heavy objects that move with the help of springs under high tension. Moving objects and springs under tension can cause injuries. Your safety and the safety of others depends on reading and following the information in these instructions. DBCI recommends that only properly trained personnel install and tension doors.

**DISCLAIMER:** Windload products are not wind certified if mounted to wood.

POTENTIAL HAZARD	EFFECT	PREVENTION
Moving Door	Can cause serious injury or death	Keep people clear of opening while door is moving. Get help or use support when lifting new door into place.
High Spring Tension	Can cause serious injury or death	Installation and repairs must be made by a trained service person using proper tools, methods and instructions. Before adjusting torsion spring, make sure door is fully open and curtain is wrapped on drums.

# COMMERCIAL DOOR SERIES

## General Information

### 1. CHECK DOOR OPENING

- Check the width and height of the door opening and verify the measurements against the sizes shown on the door packing slip.
- To ensure proper door alignment and performance, check door jambs for plumb.
- To ensure proper door alignment and performance, check header and floor level.
- Check to ensure there is sufficient side clearance at the jambs and head room above the door opening. **(See Table A)**
- The jamb surface to which the guide is to be attached should be flush for mounting purposes.

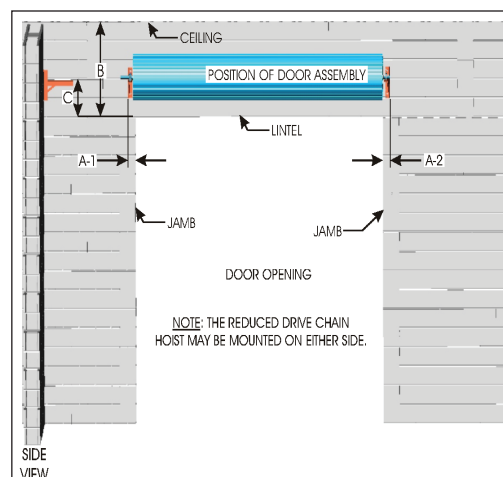
**Table A**

**MINIMUM DIMENSIONS FOR SERIES 3000 - 5000 SERIES INSTALLATION\***

Chain Operated or Motor Driven	A-1	A-2	B(Min)	C
Thru 8'0" High	10"	6-1/2"	21"	11"
Thru 10'0" High	10"	6-1/2"	22"	11"
Thru 14'0" High	10"	6-1/2"	24"	11"
Thru 16'0" High	10"	6-1/2"	26"	11"
Thru 18'0" High	10"	6-1/2"	27"	11"
Thru 20'0" High	10"	6-1/2"	28"	11"

**NOTE:** Drive side should meet A-1 required dimensions.

\*Adjustments may be needed during installation.



Interior Elevation Door Layout  
**Figure 1**

### 2. DOOR ARRANGEMENT

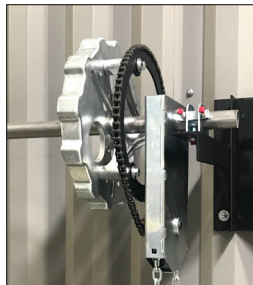
- Lay door on a clean floor inside of building and in front of opening.

**NOTE: Door can be damaged if laid on an unclean surface.**

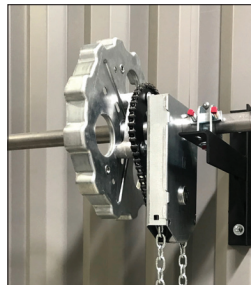
- Distribute part bags, guides, stops and brackets.

### 3. OPTIONAL REDUCED DRIVE SYSTEMS

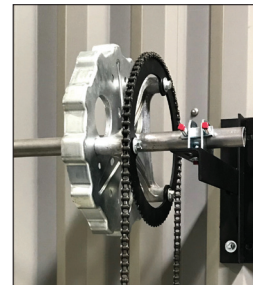
If door is to be operated by a reduced drive unit, install the sprocket on the preferred side. **(See note in Figure 1.)** Slide the reduced drive assembly over the axle and align the sprockets parallel to each other. Connect the drive chain around both sprockets using the half link and master link units provided. All hardware shown in above pictures should be installed with the appropriate chain hoist. After adjusting tension on the door **(as shown in Section 8)**, tighten the set screws for the reduction drive hoist onto the door axle. If further adjustment is required, set fasteners must be loosened for adjustment and then re-tightened after the final adjustment.



8:1 Reduced Drive  
Hoist



4:1 Reduced Drive  
Hoist

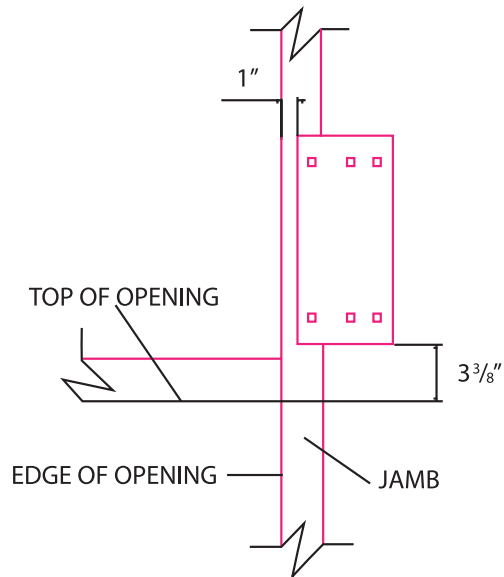


Electric Motor Kit

### MOUNTING PLATE INSTRUCTION FOR STEEL MOUNT DOORS

#### Interior Elevation RH Mounting Plate Shown LH Opposite

1. Hole pattern closest to mounting plate edge to be attached to jamb.
2. Both mounting plates to be located 1" from edge of opening.
3. Locate bottom of mounting plates at 3 3/8" above top of opening.
4. When a large and a small mounting plate are provided, install the large plate on the drive side or opening.



### 4. INSTALL DOOR BRACKETS

- A. From dimensions in Table A, mark the location of brackets by using dimension "A-1" for the chain hoist side and dimension "A-2" for the other side. If opening width of the door is less than shown on the packing slip, establish dimension "A-1" and "A-2" by placing the door drum assembly on the floor in front of the door opening, placing the brackets as required to clear the door opening, the door drum, chain gear assembly, etc.
- B. Mark the height of the bracket by using dimension "C". Measure the ceiling clearance and check this against dimension "B" to verify that the minimum ceiling clearance has been obtained. If dimension "B" has not been obtained, lower the brackets accordingly. This will require the guide length to be reduced the same amount from the bottom.

**NOTE: The finished door height will be shorter.**

- C. Attach brackets with fasteners provided.

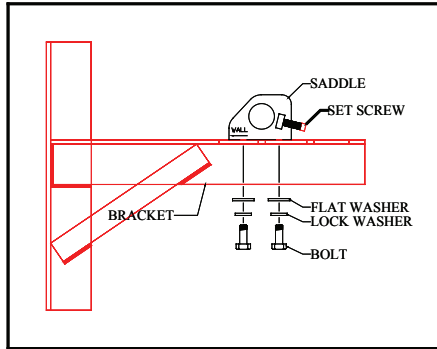
**NOTE: The brackets must be level with each other for proper door operations.**

# COMMERCIAL DOOR SERIES

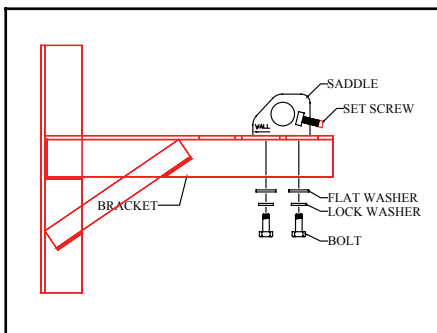
## General Information

### 5. PREPARING SADDLES FOR AXLE PLACEMENT

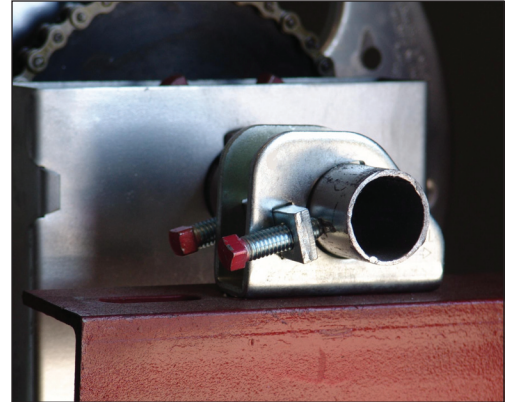
- A. Using one (1) saddle per side, with the directional arrow pointing toward the wall, slide the saddle over the axle pipe as shown in Figure 4.



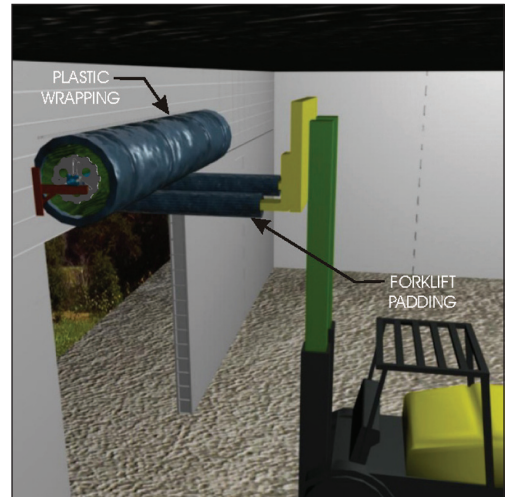
Saddle Placement:  
6'-0" to 8'-10" Tall Door  
Figure 6A



Saddle Placement:  
Over 8'-10" Tall Door  
Figure 6B



Saddle Installation  
Figure 4



Lifting Door Assembly In Place  
Figure 5

**WARNING:** Door can fall if not securely fastened to jambs. All fasteners attaching bracket to jamb must fit securely into a structural member or surface. If door falls, serious injury or death can occur.

### 6. LIFTING DOOR

It is recommended when using a forklift to adequately pad the "forks" to prevent damage and/or scratches to the door as shown in Figure 5.

- Carefully lift the door on to the brackets and attach the saddles as shown in Figure 6A or 6B. Position the door as close to the header as possible but allow enough space for the door to rotate a complete turn. Then, tighten the saddle attachment bolt to 20 foot pounds of torque.
- Center the door over the opening. If side to side adjustments are necessary, make sure that the axle and door move together.
- Tighten all of the saddle set screws to 20 foot pounds of torque.

### 7. PRE-TENSION DOOR SPRINGS

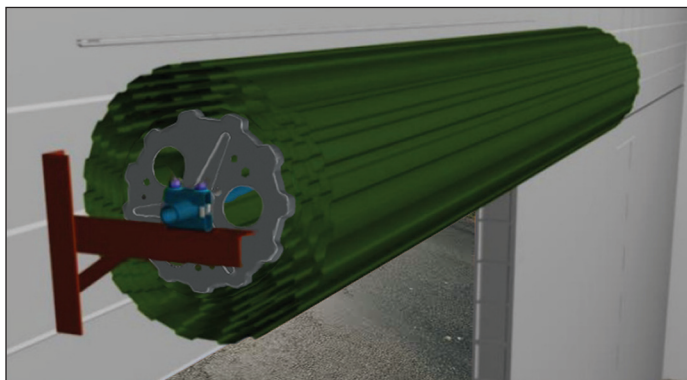
- A. The bottom bar should be in a downward or “6 o’clock” position, while the springs are relaxed. Apply tension to the springs by rotating the door two (2) complete turns in a forward direction **(as shown in Figure 7).**
- B. The amount of tension required to properly counter-balance the door will vary from door to door. Final adjustment of springs will be made in Step 12.



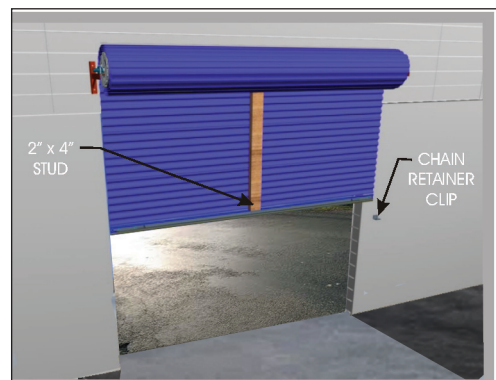
Pre-Tension Door Springs  
**Figure 7**

### 8. CUTTING THE BANDS

Cut the shipping bands that hold the curtain in a roll. Then pull the curtain down no farther than halfway.



Cutting The Bands  
**Figure 8**



Holding The Door Open  
**Figure 9**

**WARNING:** At this stage of the mounting process, the door may have a strong tendency to rise with the potential to cause damage or harm. Therefore, it must be securely held in place and kept from turning until the guide and head stops are installed. The door may be held in the desired position by a prop (as shown in Figure 9).

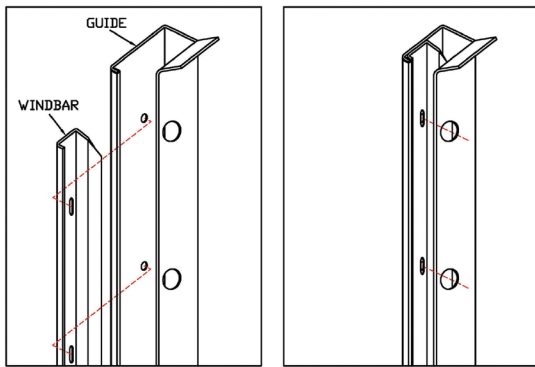
**WARNING:** Do not leave door unattended during installation.

# COMMERCIAL DOOR SERIES

## General Information

### 9. INSTALLING GUIDE RAILS, HEAD STOPS AND CHAIN RETAINER CLIP

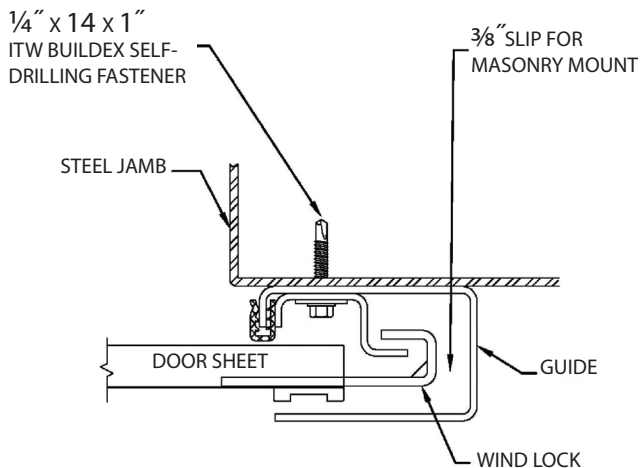
- A. Slide the guides over the edge of the door curtain while positioning them firmly against the door jambs. Allow  $\frac{1}{4}$ " clearance between the edges of the curtain and the insides of both guides. Confirm that the guides are plumb to ensure proper operation.
- B. Position wind bar in guide rails (**Figure 10**)
- C. Fasten the guide rails to the door jambs with the fasteners included in the hardware package (**as shown in Figures 11A and 11B**).
- D. Install the removable head stop. (**Figure 14**)
- E. Install the chain keeper clip. (**Figure 14**)
- F. Install provided safety label at a readable height on the door drive side guide or jamb.



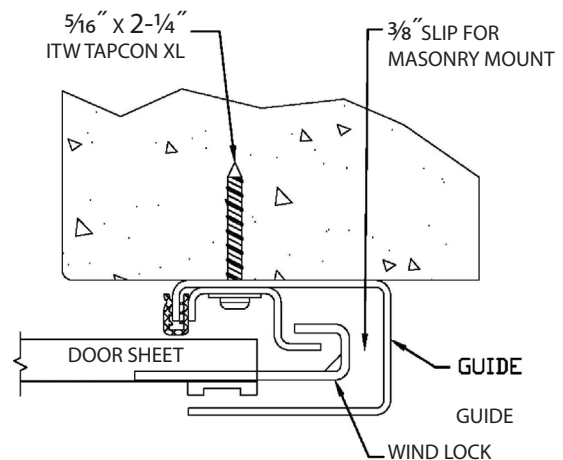
Series 3000 and 5000 Guide and Windbar

**Figure 10**

**NOTE:** All fasteners are to be installed according to the installation instructions.



Steel Mount  
**Figure 11A**



Masonry Mount  
**Figure 11B**

**NOTE:** The welding of guides to jambs is NOT recommended.

**WARNING:** Never bolt head stops to guides and then bend them out to allow passage of the bottom bar. This improper method could result in the bottom bar bypassing the head stops. Should this happen, the door would rapidly uncoil causing possible injury or death. This may also cause damage to the door and building.



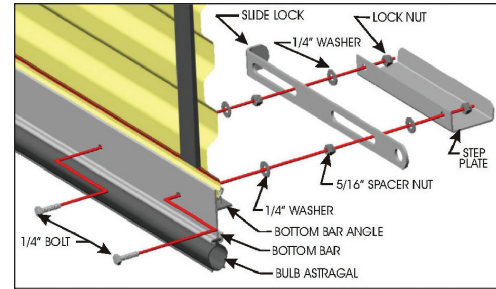
### 10. INSTALLING THE SLIDE BOLT LOCK AND STEP PLATES

- Remove factory installed bolt.
- Install the slide lock (as indicated in Figure 12).
- Install the step plates (as indicated in Figure 12).

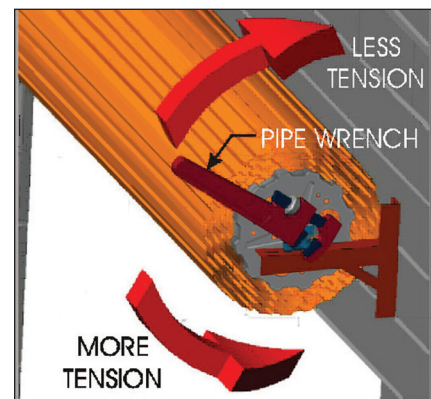
### 11. CHECKING AND ADJUSTING THE DOOR BALANCE

- If door lowers easy and raises hard: INCREASE TENSION.
- If door lowers hard and raises easy: DECREASE TENSION.
- To prevent the door from falling in the event the wrench slips, secure door in "full up" position by one of the following methods:
  - Tie a rope around the door roll while still engaged in the guides.
  - Place a clamp on the guide rails just below the bottom bar.
- Place a large pipe wrench on each end of axle in the position as shown in Figure 13. Loosen the axle saddles while holding onto the pipe wrench and adjust the tension as shown in Figure 13. The pipe wrench may turn due to spring tension. Make sure that you maintain a secure and firm grip on the pipe wrench.

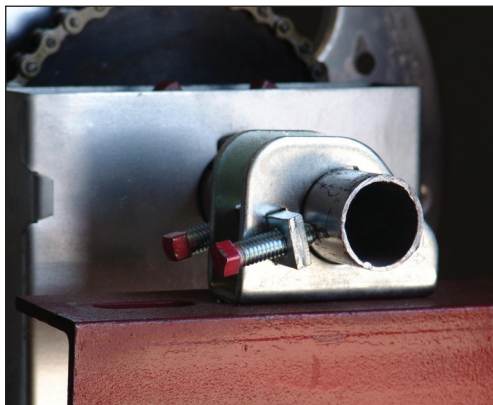
**WARNING:** Secure the door before loosening saddle bolt. Springs may be under extreme tension. Door may fall causing severe injury or death.



Slide Bolt Lock and Lift Clips  
Figure 12



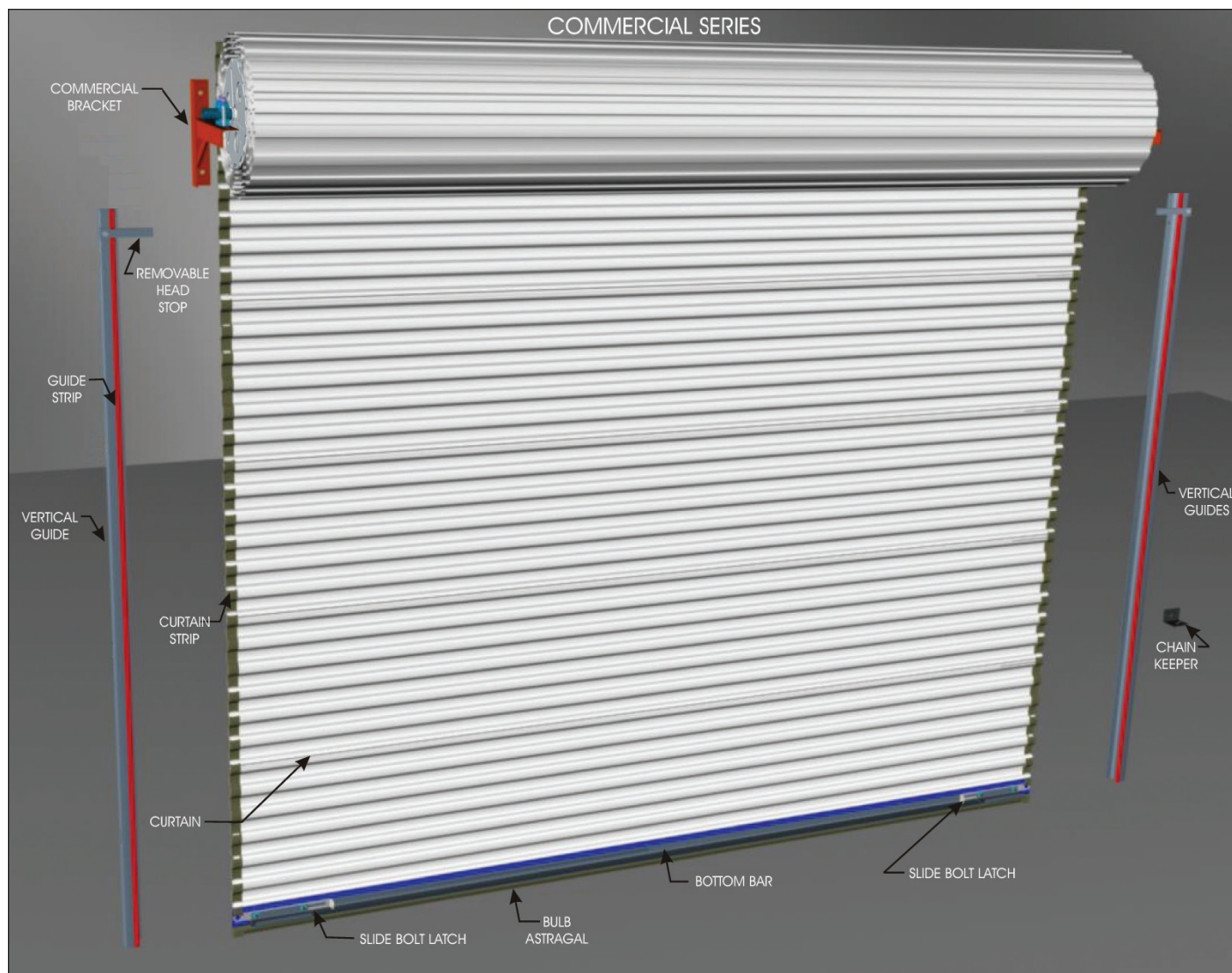
Tensioning Commercial Door  
Figure 13



Saddle Installation  
Figure 14

**WARNING:** Spring installation, repairs and adjustments must be made by trained service personnel using proper tools, methods and instructions.

- Tighten set screws onto axle to a torque of 20 foot pounds (as shown in Figure 14).
- Test the door as indicated in the previous steps listed above.
- Repeat any previous steps as needed if further adjustment is required.



## MAINTENANCE INSTRUCTIONS

In order to promote longevity of your DBCI door system, it is recommended that the following maintenance procedures be performed approximately one to two times per year:

**Astragal:** Periodically clean the dirt off of the length of the astragal.

**Springs:** Periodic adjustments to the spring tension may be necessary. A light coat of lithium-based grease should be applied to springs to reduce friction and prevent rust.

**Guide Strips:** Guides are self-lubricating but must be kept free from dirt to work their best. Wipe dirt from inside of guides to assure smooth operation of doors. A greaseless lubricant, such as silicone spray, may be used.

## TO OUR VALUED CUSTOMER

DBCI would like to thank you for helping us be the industry leader in door and building components. We endeavor to provide you with the highest quality of craftsmanship in all of our products. If you would like a tour of one of our manufacturing facilities, please feel free to contact us at (800) 542-0501.

## THANK YOU

Douglasville, GA • Houston, TX • Chandler, AZ



For more detailed information, please visit [www.dbci.com](http://www.dbci.com) or contact your local DBCI Sales Representative.

800.542.0501 | [www.dbci.com](http://www.dbci.com)